



eOne Integrated Business Solutions
Flexicoder Manual - Great Plains v8.0.1

Copyright: Manual copyright © 2004 eOne Integrated Business Solutions All rights reserved.

Your right to copy this documentation is limited by copyright law and the terms of the software license agreement. As the software licensee, you may make a reasonable number of copies or printouts for your own use. Making unauthorized copies, adaptations, compilations, or derivative works for commercial distribution is prohibited and constitutes a punishable violation of the law. Unless otherwise noted, all names of companies, products, street addresses, and persons contained herein are fictitious and are used solely to document the use of this product.

Trademarks: All company or product names mentioned are trademarks or registered trademarks of eOne Integrated Business Solutions or of their respective holders.

Warranty: eOne Integrated Business Solutions disclaims any warranty regarding the sample code contained in this documentation, including the warranties of merchantability and fitness for a particular purpose.

Limitation of liability: The content of this manual is furnished for informational use only, is subject to change without notice, and should not be construed as a commitment by eOne Integrated Business Solutions. eOne Integrated Business Solutions assumes no responsibility or liability for any errors or inaccuracies that may appear in this manual. Neither eOne Integrated Business Solutions nor anyone else who has been involved in the creation, production or delivery of this documentation shall be liable for any indirect, incidental, special, exemplary or consequential damages, including but not limited to any loss of anticipated profit or benefits, resulting from the use of this documentation or sample code.

License agreement: Use of this product is covered by a license agreement provided by eOne Integrated Business Solutions, with the software product. If you have any questions, please call eOne Integrated Business Solutions on +61 (02) 9931 2000.

Publication date: July 2004

Introduction.....	4
What's in this manual	4
Symbols and Conventions	5
Part 1: Installation.....	6
Chapter 1: Installation	7
Chapter 2: Setup	9
Part 2: Using Flexicoder.....	11
Chapter 3: Flexicoder Setup	12
Flexicoder Setup.....	12
Assigning Segments.....	13
Chapter 4: Recoding	16
Recoding Timing.....	16
Recoding Method	16

Introduction

Flexicoder is a Microsoft Great Plains add-on that automatically recodes General Ledger distributions within the Sales Order Processing and Receivables Management module. Flexicoder recodes by changing the account segments of selected distribution types. The account segment is changed based on properties of the document.

Before you put Flexicoder to work for you, take a few moments to review the information presented here. Understanding the organization can provide you with the proper approach to the Flexicoder documentation

This introduction is divided into the following sections:

- [What's in this manual](#)
- [Symbols and Conventions](#)



What's in this manual

The Flexicoder manual is designed to give you an in-depth understanding of how to use Flexicoder. The manual contains the following parts:

- [Part 1, Installation](#), provides details of how to install Flexicoder.
- [Part 2, Using Flexicoder](#), describes how to recode documents using Flexicoder.

Symbols and Conventions

This manual uses the following symbols to make specific types of information stand out.

Symbol	Description
	The light bulb indicates helpful tips, shortcuts and suggestions
	The warning symbol indicates situations you should be aware of when completing tasks. Typically, this includes cautions about performing steps in their proper order, or important reminders about how other information in Great Plains may be affected.

Convention	Description
Part 1, Installation	Bold type indicates a part name
Chapter 2, "Setup"	Quotation marks indicate a chapter name
FLEXICODER.EXE	Words in uppercase indicate a file name
TAB or CTRL+M	Small capital letters indicate a key or key sequence.

Part 1: Installation

This portion of the manual describes how to install Flexicoder.

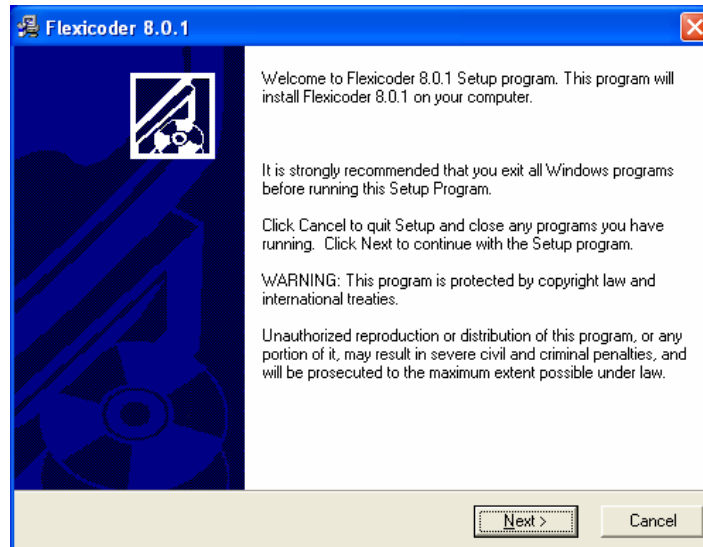
This information is divided into the following sections:

- [Chapter 1, "Installation"](#), describes how install Flexicoder
- [Chapter 2, "Setup"](#), describes how to set up Flexicoder

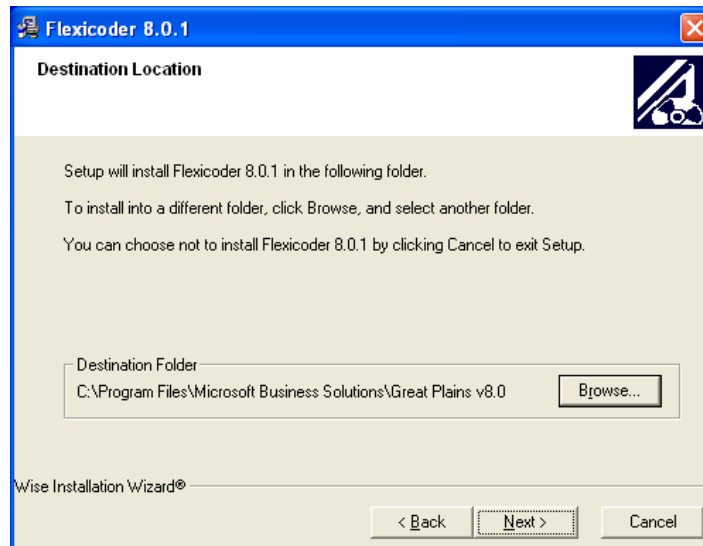
Chapter 1: Installation

To install Flexicoder:

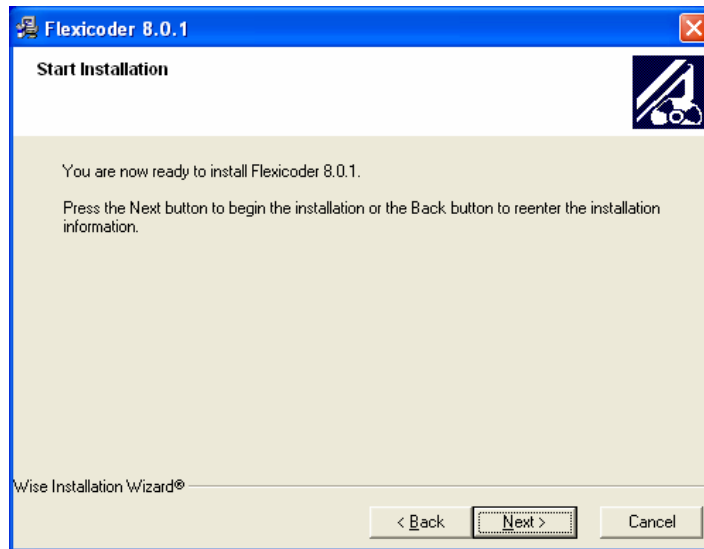
1. Run the setup executable, FLEXICODER8.EXE, which will start the Flexicoder installation.



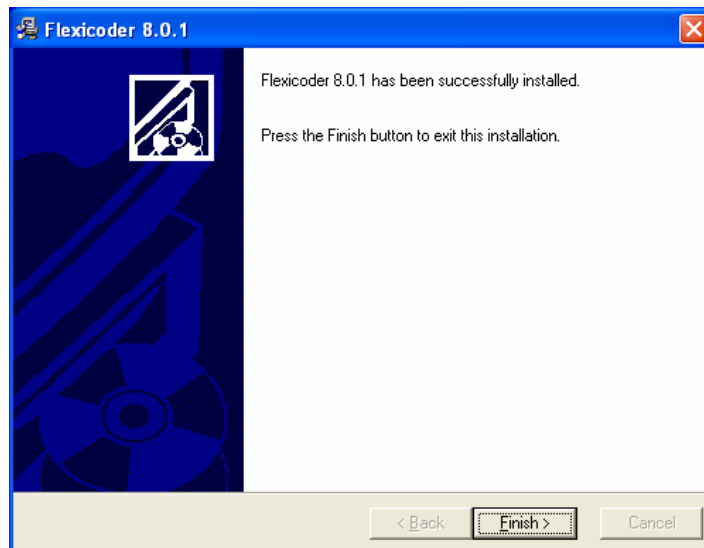
2. Click on the Next button to continue.



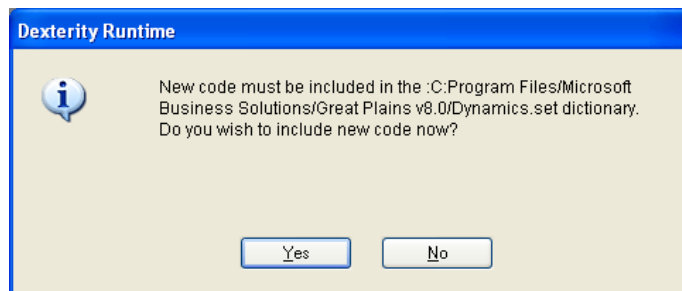
3. Select the location where your Great Plains program is installed using the Browse button. Click on the Next button to continue.



4. Click on the Next button to begin the installation.



5. Click on the Finish button to complete the installation. Great Plains will launch automatically.



6. Click on the Yes button to include the Flexicoder code into your Great Plains workstation application. If you click on the No button, you will not be able to access the Flexicoder application.

Chapter 2: Setup

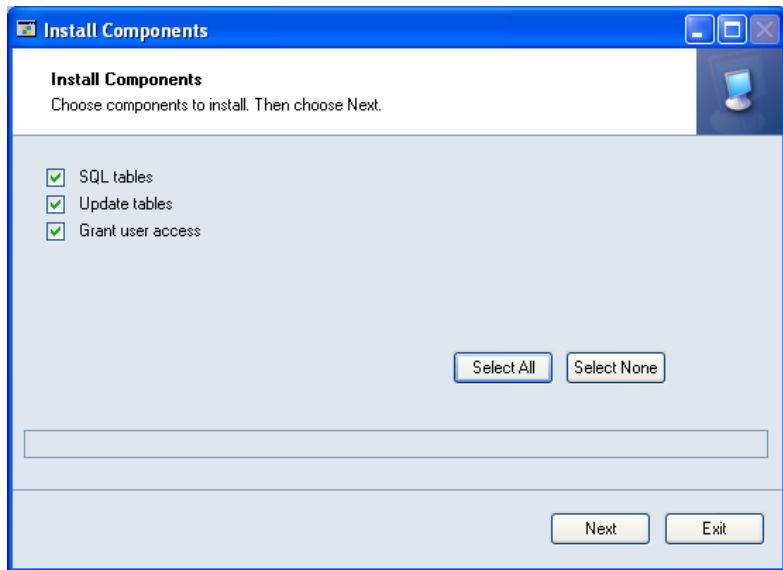
After logging in to Great Plains, you will need to run the setup routine to create tables and add palette items.

To setup Flexicoder:

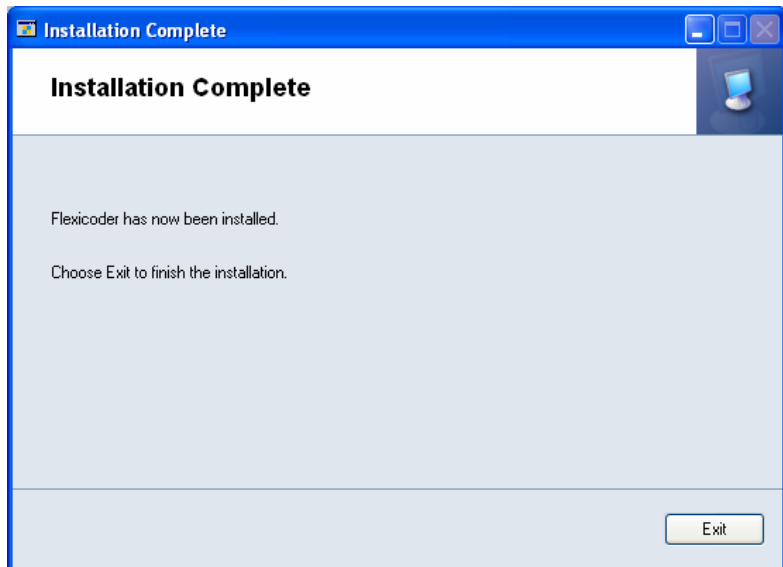
1. Click on the Add button at the top of the Shortcut bar. Select Other Window from the list of options to open the Add Window Shortcut window.
2. Select Flexicoder, 3rd Party, Install Flexicoder from the Available Windows list.
3. Click on the Add button to add the shortcut to the Shortcut bar. Click on the Done button to close the Add Window Shortcut window.
4. Select the Install Wizard shortcut to open the Install Flexicoder wizard.



5. Select Next to continue.
6. Enter your supplied registration key. If you are using The World Online sample company, you will not need to enter a registration key. Select Next to continue.



7. Select the components that you want to install. Click on the Select All button to select all components. Select Next to install the selected components.



8. Select Exit to complete the installation.

Part 2: Using Flexicoder

This portion of the manual will describe how to recode the distributions of a Sales Order Processing or Receivables Management document using Flexicoder.

The information is divided into the following chapters:

- [Chapter 3, "Flexicoder Setup"](#), describes how to define recoding options for Flexicoder
- [Chapter 4, "Recoding"](#), describes how documents are recoded

Chapter 3: Flexicoder Setup

This section describes how to enable recoding and specify how you would like Flexicoder to recode.

This section is divided into the following parts:

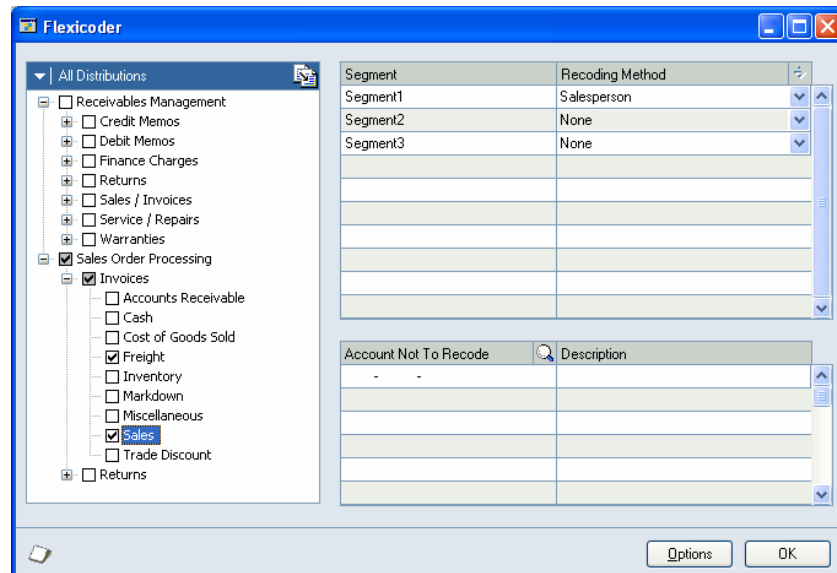
- [Flexicoder Setup](#)
- [Assigning Segments](#)
- [Options](#)

Flexicoder Setup

You can use the Flexicoder Setup window to specify which types of documents you want recoded, which distributions you want to recode, which segments will be recoded and which property of the document they will be using for recoding.

To set up Flexicoder recoding options:

1. Open the Flexicoder Setup window (Tools >> Setup >> Sales >> Flexicoder)



2. Mark the document types and distribution types that you want to recode by marking the distribution types in the distributions list.
3. For each distribution type, select the Recoding Method option for each segment in your General Ledger account structure. See [Assigning Segments](#) for more information.
4. Select the non-replacing accounts. These are accounts that will not be replaced by the recoding process.

Assigning Segments

You can use the Assign Segments window to assign segment values to the properties of the document.

To assign segment values:

1. Select the distribution type from the Distributions list.
2. Select the segment from the Segments list.
3. Click on the expansion button above the Segments list to open the Assign Segments window.

Salesperson	Segment ID
ERIN J.	100
FRANCINE B.	200
GARY W.	300
GREG E.	100
IAN M.	200
NANCY B.	300
PAUL W.	100
SANDRA M.	200

4. Enter the Segment ID for each field value. The Segment ID must be a valid segment id for the selected segment.
5. Click on the OK button. If you have selected a top-level distribution type, it will take a few seconds while the settings that you have entered roll down to the lower levels.

Options

The Options window specifies how Flexicoder handles special recoding cases. These special cases are:

- Accounts that do not exist
- Negative quantities
- Negative unit prices
- Allocation of freight, miscellaneous, accounts receivable, trade discount and cash distributions

- Allocation of freight, miscellaneous, accounts receivable, trade discount and cash distributions when the document subtotal is zero
- Allocation of freight, miscellaneous, accounts receivable, trade discount and cash distributions with negative document amounts

To set Flexicoder options:

1. Open the Flexicoder window (Tools >> Setup >> Sales >> Flexicoder)
2. Click on the Options button to open the Options window.

	Default Allocation Method	Zero Total Allocation Method
Freight	Base On Extended Price	Equal
Miscellaneous	Base On Extended Price	Equal
Trade Discount	Base On Extended Price	Equal
Accounts Receivable	Base On Extended Price	Equal
Cash	Base On Extended Price	Equal

3. Mark the “Warn user when there are recoding errors” checkbox if you want an error message to be displayed if Flexicoder fails while recoding. This will usually happen if an account does not exist.
4. Mark the “Do not recode lines with negative quantities” checkbox if you do not want to recode sales distributions if the quantity is negative.
5. Mark the “Do not recode lines with negative unit prices” checkbox if you do not want to recode sales distributions if the unit price is negative.
6. Select the Freight Allocation method. You can select from:
 - Equal – distributions are allocated equally amongst each sales line
 - Base on Quantity – distributions are allocated based on the quantity on each sales line

- Base on Extended Price – distributions are allocated based on the extended price of each sales line
- Base on Extended Cost – distributions are allocated based on the extended cost of each sales line
- Base on Shipping Weight – distributions are allocated based on the total shipping weight of each sales line. The shipping weight is calculated by multiplying the quantity from the sales line by the shipping weight from the item.
- Greatest Quantity – a single distribution is created, the account is determined by the properties of the line item with the greatest quantity
- Greatest Extended Price – a single distribution is created, the account is determined by the properties of the line item with the greatest extended price
- Greatest Extended Cost - a single distribution is created, the account is determined by the properties of the line item with the greatest extended cost
- Greatest Shipping Weight - a single distribution is created, the account is determined by the properties of the line item with the greatest shipping weight

If you select Base on Quantity, Base on Extended Price, Base on Extended Cost, or Base on Shipping Weight, you will also need to select how to allocate freight when the total of the quantities, extended prices, extended costs, or shipping weights is zero. You can select from:

- Equal – distributions are equally distributed amongst each sales line
- Do not recode – distributions are not recoded and the default account is used

If you do not want to include negative values when allocating freight, unmark the 'Include negative values when allocation Freight' checkbox.

7. Select the Miscellaneous, Trade Discount, Accounts Receivable, and Cash Allocation methods in the same manner as the Freight allocation.
8. Click on the Save button.

Chapter 4: Recoding

This portion of the documentation describes when recoding occurs, how distribution accounts are recoded, and what occurs when the account generated by the recoding process does not exist.

Recoding Timing

Recoding occurs whenever the Sales Order Processing or Receivables Management document is saved. This is to ensure that all fields required for the recoding process are available. To check if the recoding process has generated the correct distributions before posting, you must first save the document, reopen the document and then select the Distributions button.

Recoding Method

New distribution accounts are generated by replacing account segments.

Multiple distribution accounts are generated for line specific Replace By options (i.e. Item Number, Item Class, Salesperson, Sales Territory, Location).

Distribution lines are consolidated if the account and distribution type are the same.

If the new account generated by the recoding process is not a valid account number, the account will not be changed. The invalid account number will be saved in a table so that it can be reported upon.